

harman/kardon®  
**drive** + play™ 2



Quick-Start Guide

# Important!



*WARNING: Operation of any feature of this device while driving could be dangerous. Always be careful and attentive to your vehicle and the traffic around you. Obey all traffic laws and observe safe driving practices.*

*Do not connect or disconnect your portable music player or program the Drive + Play 2 system while driving. Always pull off the road and park in a safe position before browsing your portable music player or adjusting the settings on the Drive + Play 2 system.*

*Do not use headphones while operating any vehicle. The Drive + Play 2 system audio output is not suitable for driving headphones and is intended to output a signal appropriate for an audio system's line-level input jack or FM antenna input.*

This device complies with Part 15 of the FCC Rules. Operation is subject to the following two conditions: (1) This device may not cause harmful interference, and (2) this device must accept any interference received, including interference that may cause undesired operation. This equipment has been tested and found to comply with the limits for a Class B Digital Device, pursuant to Part 15 of the FCC Rules. These limits are designed to provide reasonable protection against harmful interference in a residential installation. This equipment generates and can radiate radio frequency energy and, if not installed and used in accordance with the instructions, may cause harmful interference to radio communications. However, there is no guarantee that interference will not occur in a particular installation. If this equipment does cause harmful interference to radio or television reception, which can be determined by turning the equipment off and on, the user is encouraged to try to correct the interference by one or more of the following measures:

- Reorient or relocate the receiving antenna.
- Increase the separation between the equipment and receiver.
- Connect the equipment into an outlet on a circuit different from that to which the receiver is connected.
- Consult the dealer or an experienced radio/TV technician for help.

Any changes or modifications not expressly approved by the party responsible for compliance could void the user's authority to operate the equipment.

# Important!

## Connecting the iPod®

Always hold the Drive + Play 2 system's iPod dock connector by its sides and gently insert (or remove) the dock connector. Never use excessive force to insert or remove the connector, or damage to your iPod may occur.

## Lost Data

Harman Kardon is not responsible for any lost data when using the Drive + Play 2 system. Be sure to back up the audio data files on your computer.

## About Installation

**IMPORTANT:** The Drive + Play 2 system should be installed according to these instructions and relevant federal, state or local laws and regulations, which the purchaser should determine prior to installation or use. For safety reasons, do not attempt to disable any safety function incorporated in this device. Any alteration of this device may cause serious injury and shall void the warranty.

Although we recommend professional installation for your Harman Kardon Drive + Play 2 system, this product is also designed for do-it-yourself installation, especially when using the wireless FM transmission method. The enclosed instructions explain how to install the Drive + Play 2 system in a general sense, but they do not show the exact methods for your particular vehicle. After reading this guide, if you feel uncomfortable in performing the necessary steps to install the product, consider asking your car-audio dealer about professional installation options.

## Warranty Information

Drive + Play 2 is warranted against defects. The duration of the warranty depends on the laws in the country in which it was purchased. Your local Harman Kardon retailer can help you determine the length of your warranty. To register your product, please visit us at: [www.harmankardon.com](http://www.harmankardon.com)

## Your Package Should Include:

Cigarette Lighter Hub  
Lighter Extension Cable  
Hard-Wire Power Cable  
Audio Cable  
USB Adapter  
iPod Cable

Display Screen  
Display Cable  
Display Mounting Base  
Wired FM Transmitter Adapter  
Wireless Control Knob  
CR2032 Battery

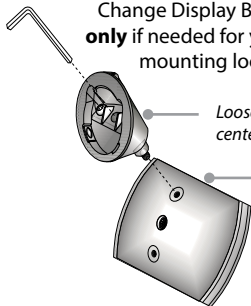
Adhesive Mounting Pads (2)  
Alcohol Cleaning Pads (2)  
Mounting Screws (10)  
Hex Keys (1.5mm and 3mm)  
Quick-Start Guide  
Warranty Card

# Choose the Display Location

## ▲ Select Display Mounting Location

⚠ See below

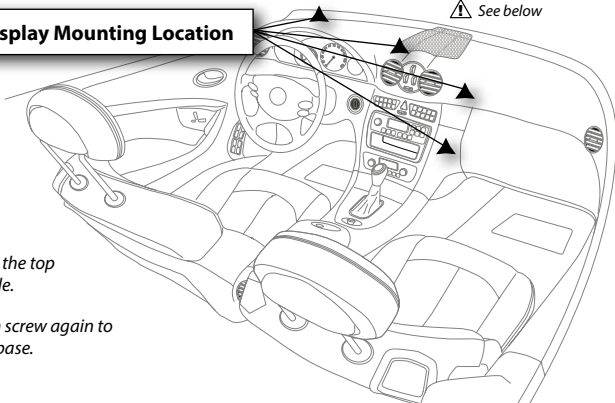
Change Display Base Mount **only** if needed for your chosen mounting location



Loosen 3mm screw in center of the base.

Move base to the top mounting hole.

Tighten screw again to secure base.



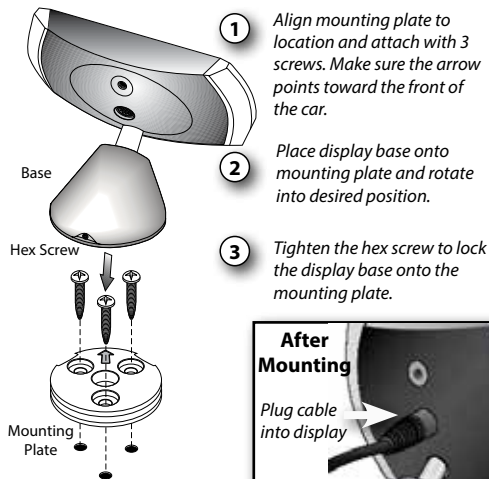
The installation of this device between the driver and the windshield or otherwise in any manner that obstructs the driver's clear view of the road or traffic conditions is dangerous and may be prohibited by law. Do not install this device in any manner that impairs the safe operation of the vehicle.

The display should be positioned to eliminate glare and reflections, and should be as close as possible to the driver's normal line of sight, as long as such positioning does not otherwise obstruct the driver's view or impair the safe operation of the vehicle. Do not place device on the vehicle's dashboard unsecured. Do not install this device on any air bag panels or in the deployment field of any air bags. For safety reasons, do not attempt to disable any safety function incorporated in this device. Any alteration of this device may cause serious injury and shall void the warranty.

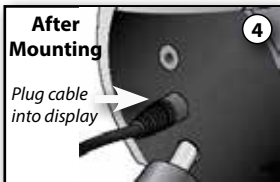
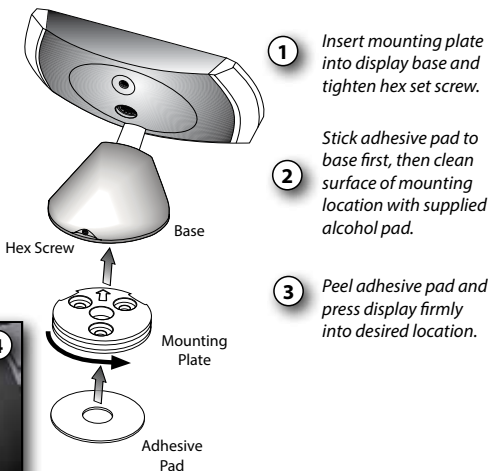
# Installing the Display

1 → 2 → 3 → 4

## Mounting with Screws



## Mounting with Adhesive Pad



# Installing the Wireless Control Knob

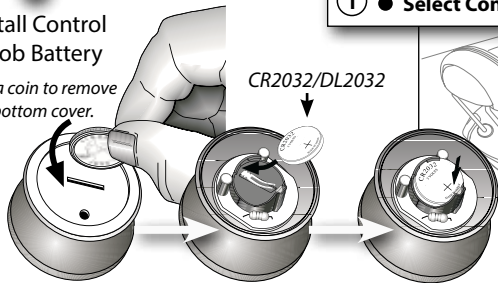


2

## Install Control Knob Battery

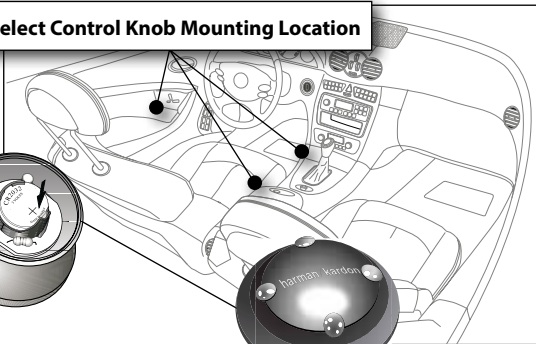
Use a coin to remove the bottom cover.

CR2032/DL2032



1

## Select Control Knob Mounting Location



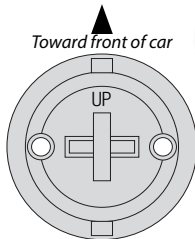
3

## Mount Control Knob Base

Orient the base so that the arrow is facing the front of the car.

You can either screw the base to the mounting location or use the supplied adhesive pad.

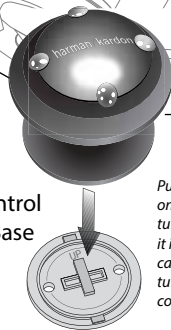
If you use the adhesive pad, you must **FIRST CLEAN** the surface with the supplied alcohol cleaning pad.



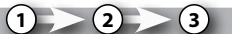
4

## Attach Control Knob to Base

Push the knob down onto the base, and turn clockwise to lock it into place. The knob can be removed by turning the bottom counterclockwise.

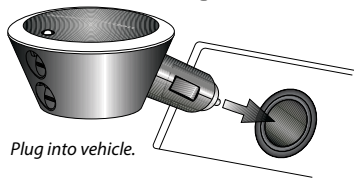


# Connections to the Cigarette Lighter Hub



1

Direct Cigarette  
Lighter Plug-In

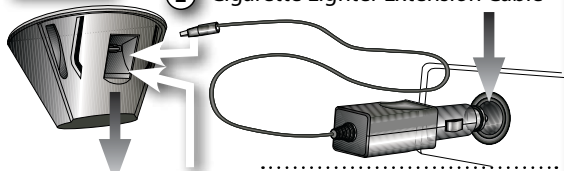


Plug into vehicle.

## Options

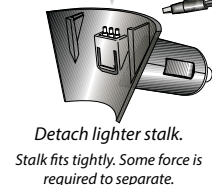
2

Cigarette Lighter Extension Cable



3

Hard-Wired  
Installation

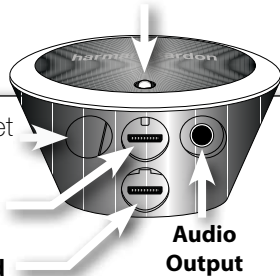


Detach lighter stalk.

Stalk fits tightly. Some force is  
required to separate.

- YELLOW = Constant source of +12V
- RED = Switched source of +12v (ACC)
- BLACK = Ground

Power Indicator



harman net  
Expansion Port

Display

iPod

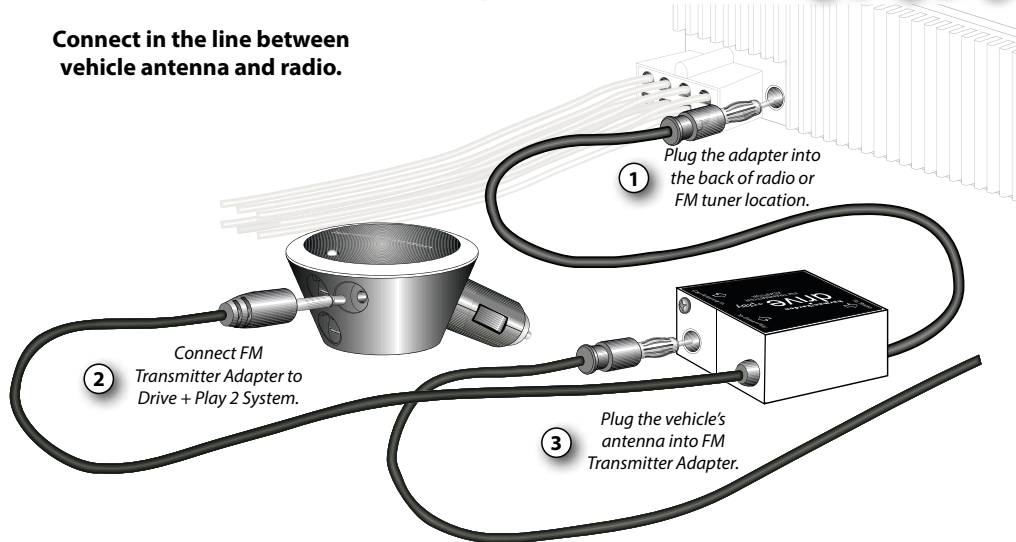
Audio  
Output

## Audio Output Options

1. If using the built-in wireless FM transmitter, leave the audio output jack empty.
2. To wire directly to your vehicle's antenna, plug the supplied FM Transmitter Adapter into the audio output jack. See diagram on next page.
3. To wire into an AUX input, connect the included audio cable's 3.5mm plug to the audio output jack and then into your vehicle's AUX input.

# Wired FM Transmitter Adapter Connections **1** **2** **3**

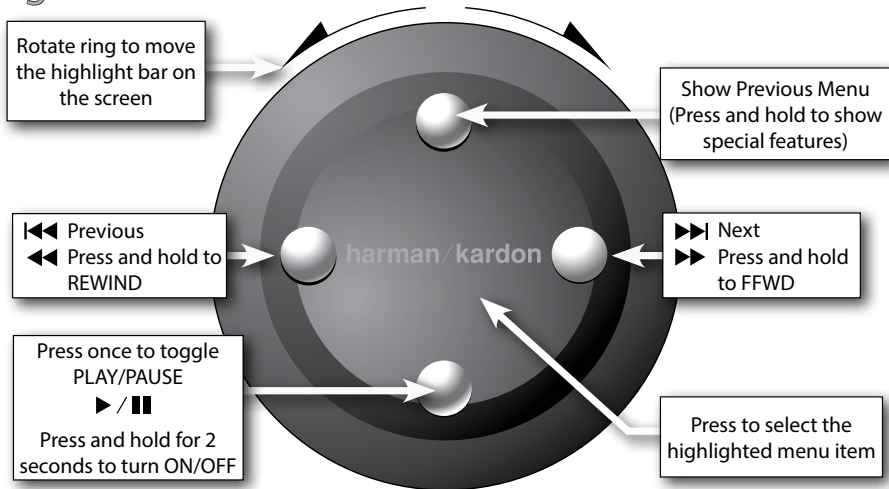
**Connect in the line between  
vehicle antenna and radio.**



*If your car's audio system does not provide an auxiliary input and there is no third-party adapter available, use the Drive + Play 2 system's wired FM Antenna Adapter for the best audio performance.*



# Using the Control Knob

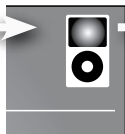


*Note - If Drive + Play 2 is turned off with the bottom button it must be turned back on that way!*

*If the control knob is unresponsive, try pressing the top, center, and right buttons simultaneously for 2 seconds, then turn the outer ring until the highlight bar moves. If the control knob is still unresponsive, try a fresh CR2032-type battery.*

# iPod® Functions

1 → 2 → 3



## iPod Connection Confirmation

When your iPod is successfully connected, the iPod icon appears in the top-right corner of the display. "iPod" will also appear as the first menu item.



## Playing Music

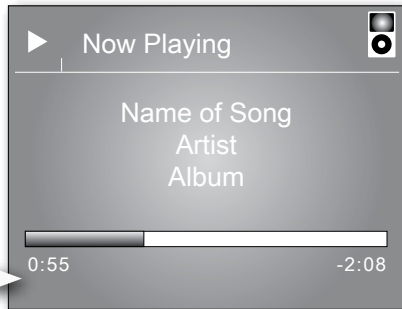
The Drive + Play 2 system is designed to make navigating the menus on your iPod simple and intuitive. Select menu items using the scroll wheel and press the center button to select.

- 1 Select "iPod" from source menu.



- 2 Browse list and select song.

- 3 View current selection on the screen.

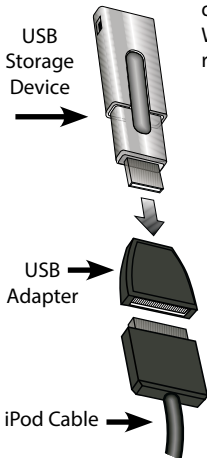


# Connecting USB Devices

1 → 2 → 3

## USB Drive Connection Confirmation

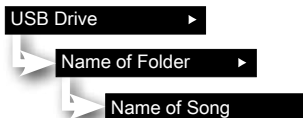
The Drive + Play 2 system is compatible with USB Flash Memory devices and other USB devices. For a complete list of compatible devices, please visit [www.driveandplay2.com](http://www.driveandplay2.com). When your USB Drive is successfully connected, the USB icon appears in the top-right corner of the display. **USB Drive** will also appear as the first menu item.



## Playing Music

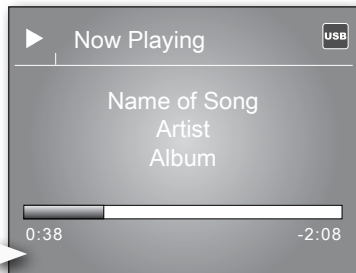
If your music files contain ID3 tags, you can browse just like browsing the iPod (see previous page). If no ID3 tags are contained in the files, use the folder structure described below.

- 1 Select "USB Drive" from source menu.



- 2 Select song.
- 3 View current selection on the screen.

USB Drive ▶



# Configuring Audio Playback

## Wireless FM Transmitter or Wired FM Antenna Adapter

If you use the built-in wireless FM transmitter, no additional wired audio connection is necessary. To use the wired FM Antenna Adapter, you will need to wire it into your vehicle's FM Antenna connection first, then complete these steps. Either way, you must enable and select the FM transmitter frequency to hear audio through your vehicle's FM radio. Remember, you may try several frequencies for the best result.

### 1 Enable the FM Transmitter and Select FM Frequency Preset



*Once you have selected an FM preset, tune your FM radio to that same station. you should hear audio playback clearly. If that frequency is not playing music clearly, select another preset by locating a frequency on your radio that is only static and save that as a preset. This will offer the clearest path for the Drive + Play 2 system's audio playback.*

Enable	Yes
Preset 1 : 88.1	<input checked="" type="radio"/>
Preset 2 : 88.7	<input type="radio"/>
Preset 3 : 107.9	<input type="radio"/>
Add Preset	<input type="button"/>

## Line-Output Audio Connections

To use the Line-Out audio connection, the FM Transmitter must first be disabled using the steps shown. Following that, you will need to connect into your head unit's AUX input. Many vehicles may require a third-party adapter (not included) to provide this type of connection.

### 1 Disable the FM Transmitter



# Letter Seek

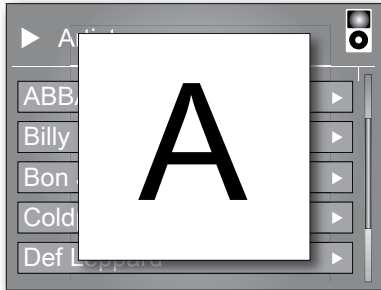
1 → 2 → 3 → 4

This feature allows you to quickly browse **alphabetically sorted lists**, such as Artist, Playlists and Songs in the iPod.

- 1 **Press and hold top menu button in an alphabetically sorted list**



- 2 **Large letter appears on the screen**



3

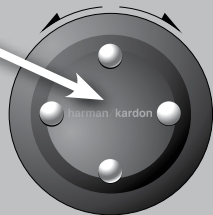
Turn the ring to advance the letters manually



or, press the "Next" or "Previous" buttons to begin automatic scrolling.

4

Press "Select" to advance to the first menu item that begins with the displayed letter.



# Automatic Mix

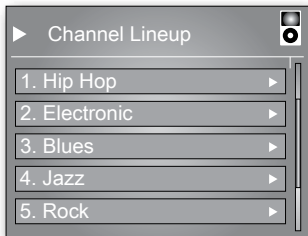


Drive + Play 2 system creates channels automatically, and you can refine the channel content during playback. Choose **“More like this”** to place a **higher priority** on songs similar to the current selection. Choose **“Less like this”** to place a **lower priority** on songs similar to the current selection. Choose **“Play something else”** to **reprioritize selections** to something different than the song that’s currently playing.

- ① Select “iPod” and then select “Automatic Mix”.

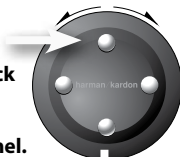


- ② Browse list and select channel.



Now your iPod plays the channel.

- ③ Press and hold top menu button during Automatic Mix playback to configure content.



- ④ Configure the channel.

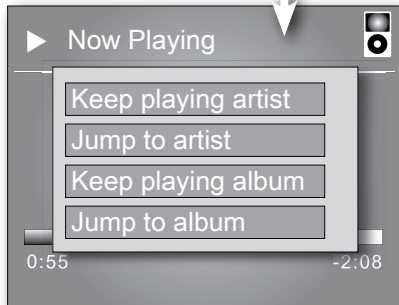


This lets you customize the content.

## “Keep playing” / “Jump to” Options

This feature allows you to continue playing songs from the current artist or album without leaving the “Now Playing” screen.

- 1 **Press and hold top menu button during playback.**



### Keep playing artist

This feature will continue playing the current song, then play the remaining songs by that artist in order.

### Jump to artist

This feature will stop playing the current song and begin playing all the songs by that artist in order.

### Keep playing album

This feature will continue playing the current song, then begin playing the remaining songs on that album in order.

### Jump to album

This feature will stop playing the current song and begin playing all the songs on that album in order.

# Troubleshooting

Troubleshoot problems, download updates, and find out about more features at:

**[www.driveandplay2.com](http://www.driveandplay2.com)**

For customer and technical support, call

**516.255.4545**

harman / kardon®

**drive + play™ 2**

250 Crossways Park Drive, Woodbury, New York 11797

[www.harmankardon.com](http://www.harmankardon.com)

©2007 Harman International Industries, Incorporated. All rights reserved  
Part No. DP2QSGNA001

## **A Harman International Company**

Features, specifications and appearance are subject to change without notice. Screen images may differ from actual product.

Harman Kardon is a registered trademark, and Drive + Play 2 is a trademark, of Harman International Industries, Incorporated.

iPod is a registered trademark of Apple Computer, Inc.



Please Recycle  
QSG DP2 Rev 2.1